



<b>Project:</b>
<b>Type:</b>
<b>Date:</b>
<b>Product Code:</b>
<b>Approval:</b>

**BLRT**

The BLRT is a recessed lay-in fixture designed for use in T-bar ceilings. The BLRT is well suited for use in office spaces where a clean, professional DSSHDUD is required.

**FEATURES**

- Has a full range of voltage options from 120-277V and 347V
- L70 of 125,000 hours
- Fixture lensing provides an even light distribution through the use of extra wide beam angle LED chips and a specially designed extruded lens
- 30x30 Adapter Kit
- Type IC

**OPTIONS**

- 0 – 10V dimming standard
- Available in 3000K, 3500K, 4000K, and 5000K
- Lumen packages are available in 2,000, 3,000, 4,000, 5,000 and 6,000 lumens
- Housing available with passive air handling

**APPLICATIONS**

- Hospitals
- Offices
- Schools

**WARRANTY**

- Standard 5-year system, and 10 year LED warranty

**OPTICS**

Powder coated body in high-reflectance white. High-efficiency diffuser maximizes light distribution while providing diffusion of LED point sources.

**ELECTRICAL**

All components are UL recognized

**MOUNTING**

Holes provided for chain or hanger wire mounting support for T-Bar ceilings. Surface mount kits are also available (Consult factory for details.)

**CONSTRUCTION**

- Fixture materials are precision bent for added strength and rigidity
- Cold rolled steel body powder coated in high reflectance white.
- Access panel provided for easy wiring
- Shallow fixture design for easy of installation and a clean, professional look.

**APPROVAL**

- ETL Certified
- DLC Certified

**PRODUCT KEY**

Fixture Type	Fixture Size	Lumen Output	CRI & Colour Temperature	Driver Voltage	Options
BLRT					
	14	2	830	UNV	
	22	3	835	347	
		4	840		
	24	4	850		
		5			
		6			

**Options**

Mounting	Air Handling
M15 - Surface Mount Kit	H20 - Housing with Passive Air Handling
M32 - 30x30 Adapter Kit	

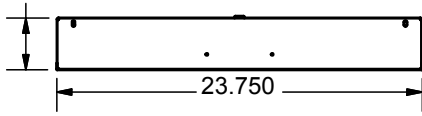
\*SPECIFICATIONS MAY CHANGE WITHOUT NOTICE\*



PRODUCT DIMENSIONS

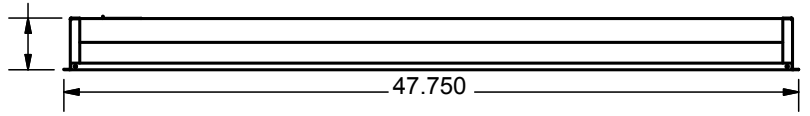
2x2 and 2x4 End View

3.379



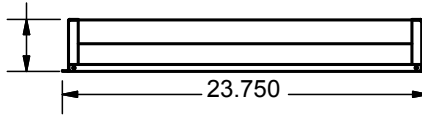
2x4 Side View

3.379



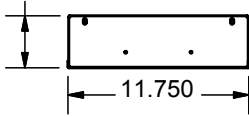
2x2 Side View

3.379



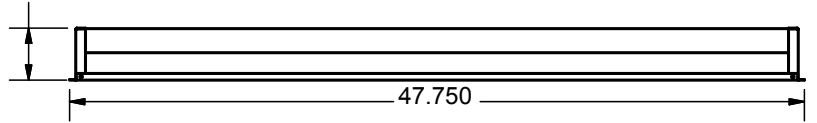
1x4 End View

3.379



1x4 Side View

3.379



\*SPECIFICATIONS MAY CHANGE WITHOUT NOTICE\*

